

Building a better

Bishop Auckland

for everyone



**Public Meeting
Facilitated by Bishop Auckland Town Council**



**Monday 16th January 2023
Bishop Auckland Town Hall**

*Regeneration and Investment in Bishop Auckland –
progress and next steps*



Welcome
Cllr Michael Siddle
Mayor, Bishop Auckland Town Council





Bishop Auckland Town Council

- Cockton Hill Ward – Andrew Legge, Michael Siddle & Lesley Zair
- Henknowle – Katie Eliot, Mike Harker & Kimm Lawson
- Town Ward – Adam Zair & Sam Zair
- Woodhouse Close Ward – Jamie Blackburn, Harley Balmer-Howison & David Wilson

- Small Team of 3 - Sarah Harris, Town Clerk, Vicki Booth, Deputy Clerk & Michael Armstrong, Admin.



“Working in partnership to improve the quality of life for all those who live, work, visit or invest in Bishop Auckland.”



Evening Format:

- Project Presentations
- Q & A Session



Vibrant Bishop Auckland



2022

Delivery

- Design, planning procurement
- Developing comms and information
- Developer engagement
- Sequencing change and improvement

Communication

- More regular updates on what's planned / better sharing of information
- Formed Strategic Advisory Panel
- Programme of newsletters
- New regeneration focussed website



New Website & Newsletter



www.bishopaucklandregeneration.com



9-11 Newgate St

- New Leisure Entertainment facilities
- Redeveloping long term vacant site.
- STACK procured as Development Partner
- Current planning application



STACK

STACK



BARLEY & ME

BARLEY & ME

BARLEY & ME

BARLEY & ME

STACK
KAYE

STACK
BEHOLD

STACK

STACK
LINCOLN








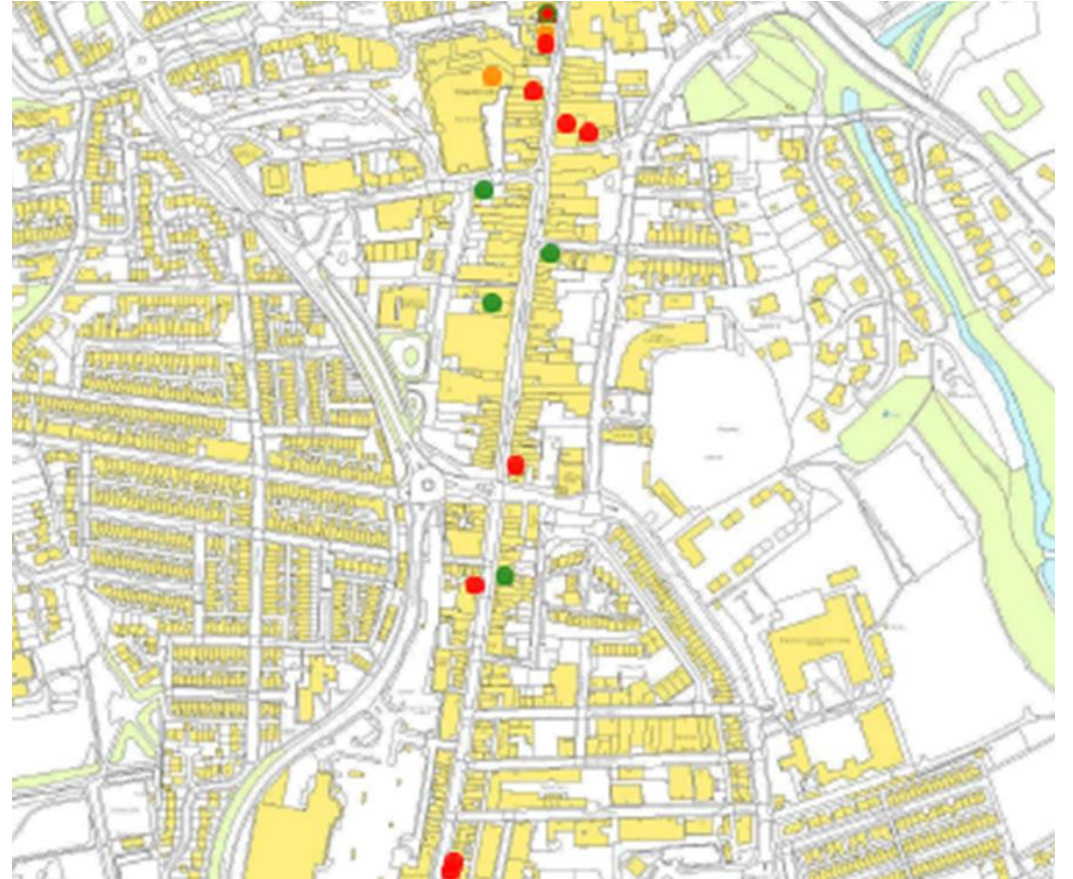
Property Reuse Fund

Focus on reducing vacant buildings

£450,000 of £1 million spent or committed

2 schemes completed, 2 approved, 12 under development

	Offer pack issued / scheme complete
	Planning permission secured / application in process
	Expression of interest received







Graham Thomas Property reuse Scheme 47 Newgate St.

Prominent property block –
Newgate St / Victoria Ave

Refurbishment to provide:

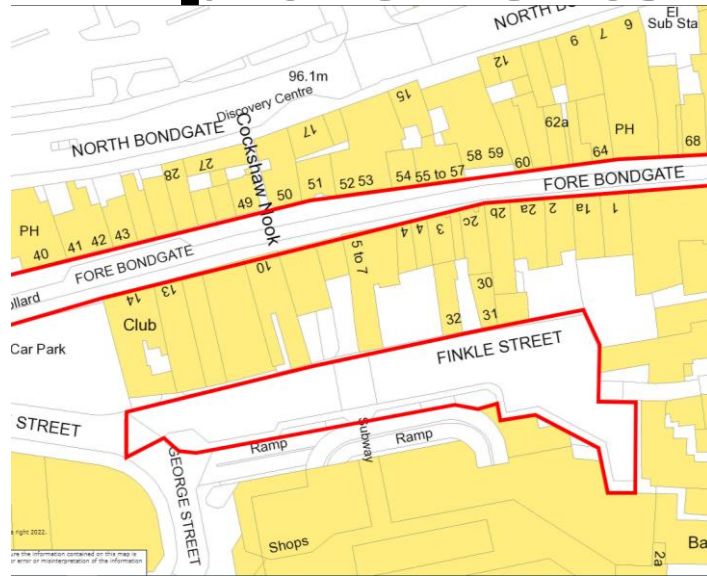
- New retail space and
- 10 residential
apartments.
- Relocation of post office

Jan '23 start





Continued programme of Public Realm, lighting and signage improvements





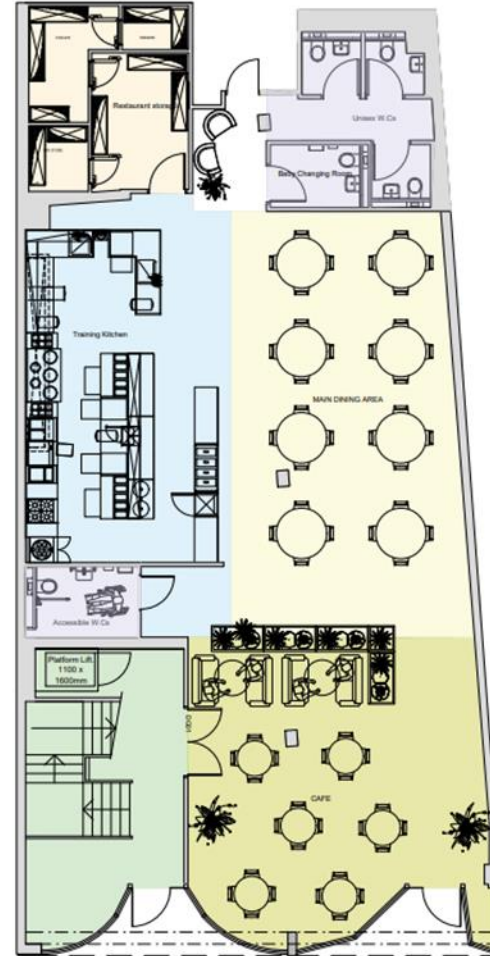
New Bus Station and car parking







Springboard to Employment - on site



- Training facilities across three floors,
- learning space includes a digital skills focus
- Training kitchen / cafe
- Display space to promote new businesses / products
- Business support space



Market Place Hotel

- Repurposing empty buildings
- Providing facilities to support visitor numbers
- New job opportunities





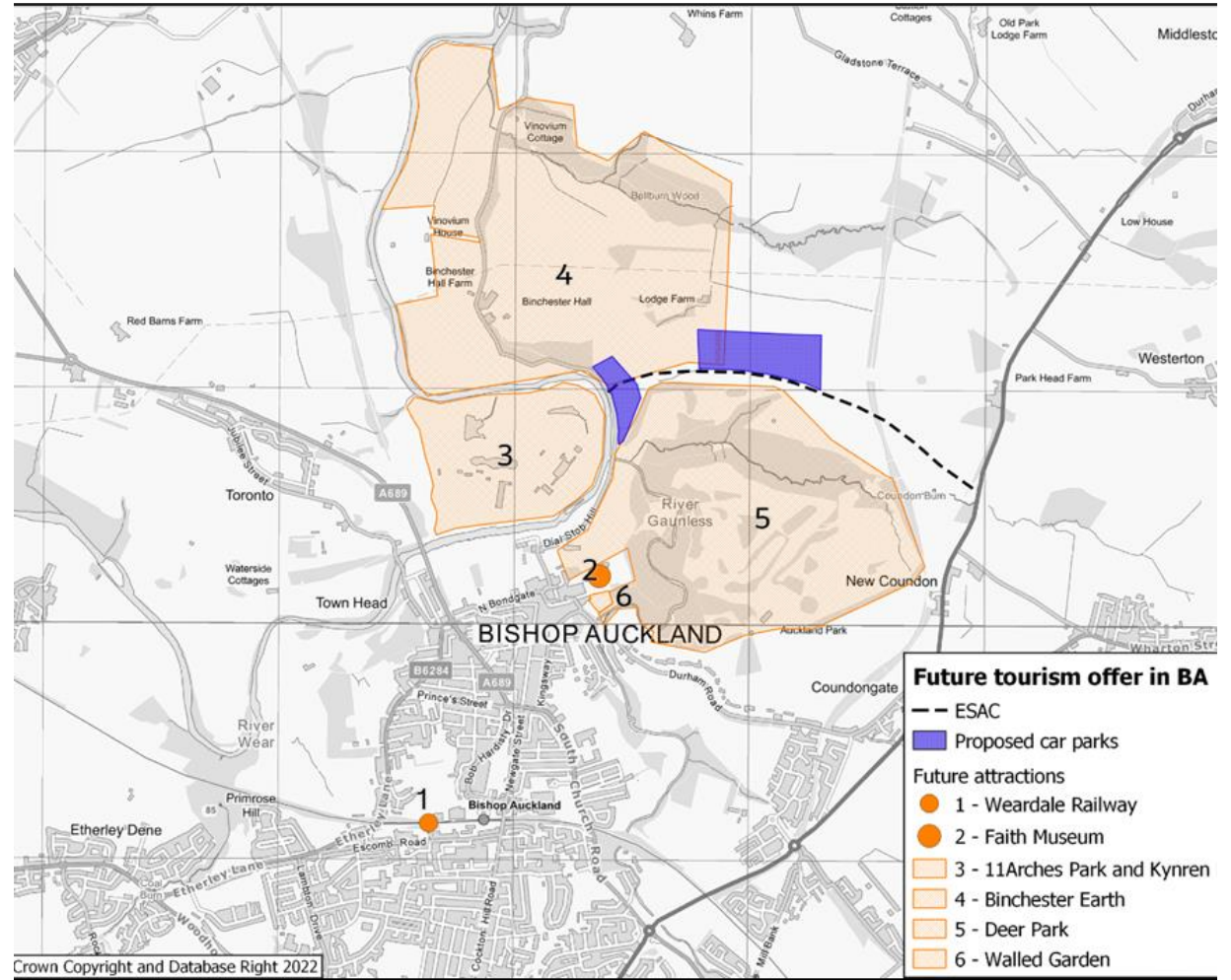
Kingsway Car Park

CONCEPT DESIGN





Eastern Sustainable Access Corridor (ESAC)





KYNREN

AN EPIC TALE OF ENGLAND





Show areas

- 1 Kynren > built
- 2 Fina > built
- 3 Maze of Fame > built
- 4 Worm of the Wear > built

Period Villages

- ▲ Viking Village > built

Functional areas

- 1 Farmhouse > built
- 2 Props Sheds > built

F&B & Retail Areas

- 1 Georgian Shop > built
- 2 Arches Hall > built





Show areas

- 1 Kynren > built
- 2 Fina > built
- 3 Maze of Fame > built
- 4 Worm of the Wear > built
- 5 The Lost Feather > 2024
- 6 Robin Hood > 2025

Period Villages

- 1 Viking Village > built
- 2 Georgian Village > 2025
- 3 Medieval Village > 2025

Functional areas

- 1 Farmhouse > built
- 2 Props Sheds > built
- 3 Indoor horse arena > 2024
- 4 Aviaries > 2024
- 5 Office & storage > 2025

F&B & Retail Areas

- 1 Georgian Shop > built
- 2 Arches Hall > built





Show areas

- 1 Kynren built
- 2 Fina built
- 3 Maze of Fame built
- 4 Worm of the Wear built
- 5 The Lost Feather 2024
- 6 Robin Hood 2025
- 7 The Little Centurion 2026
- 8 Conquest of the Seas 2027
- 9 Walk Through 1 2028
- 10 Walk Through 2 2029

Period Villages

- 1 Viking Village built
- 2 Georgian Village 2025
- 3 Medieval Village 2025
- 4 Tudor Village 2027

Functional areas

- 1 Farmhouse built
- 2 Props Sheds built
- 3 Indoor horse arena 2024
- 4 Aviaries 2024
- 5 Office & storage 2025
- 6 Entrance 2026

F&B & Retail Areas

- 1 Georgian Shop built
- 2 Arches Hall built
- 3 Dinner Show 2027
- 4 Entrance Village 2026





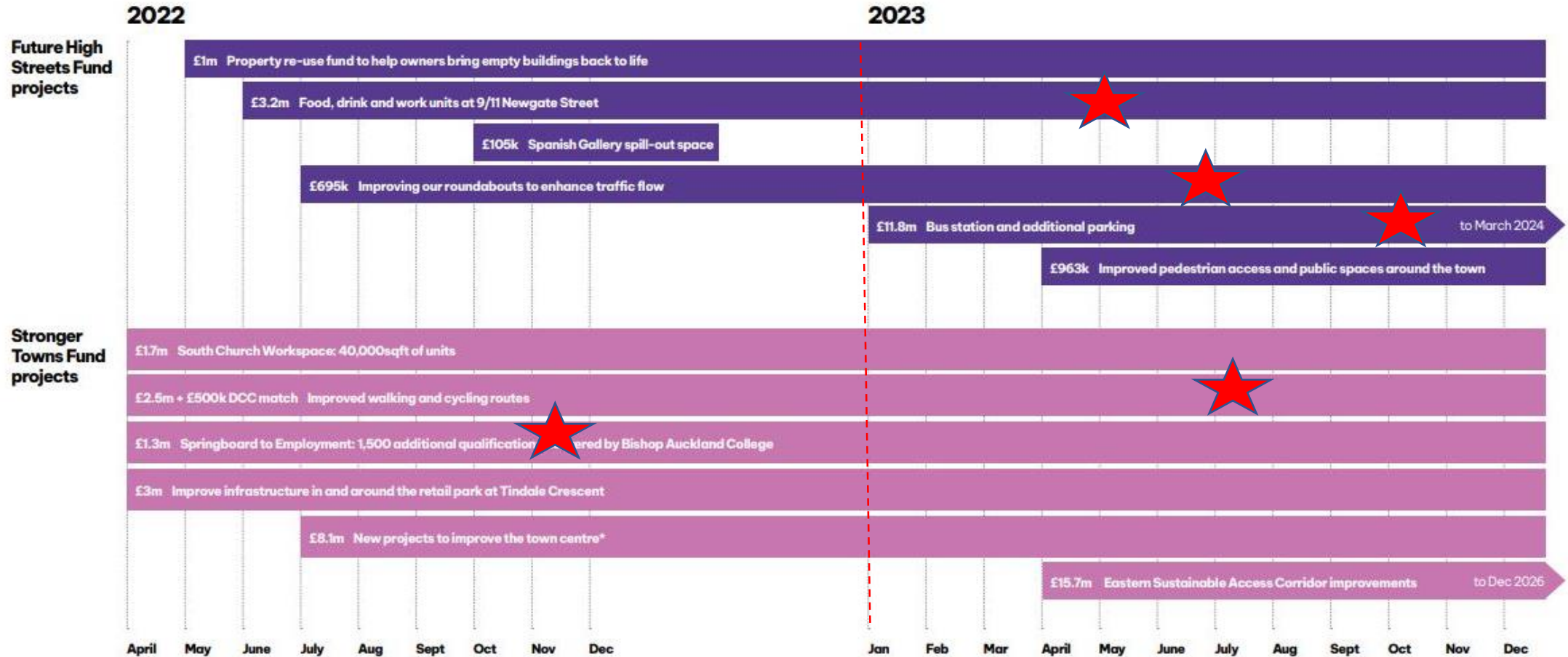
Tindale Crescent

- Junction Improvements
 - A688 / Tindale Crescent
 - Maude Terrace / Tindale Terrace
 - A688 / Watling Road
- Facilitating new Retail / Leisure Development
- 450 jobs
- Delivering long term road capacity





Delivery timeline





Future Consultation opportunities

Month	Project	Type	Scheme Lead
January	9-11 Newgate St Springboard to Employment Public Mtg	Planning Planning General Update	STACK Bishop Auckland College
February	Bus Station / Car Park (FHSF) Fore Bondgate / North Bondgate link Newsletter #3	Pre Planning & Planning Planning	DCC DCC
March			
April-June	Newsletter #4 (May)		
July- September	Fore Bondgate Public Realm Durham Dales Gateway	Pre Planning Pre Planning	DCC TAP
October - December	ESAC & new attractions North Newgate St hotel	Planning Pre Planning	DCC / TAP/ 11 Arches TAP



www.bishopaucklandregeneration.com

Q&A

Panel Discussion

